



## Welcome to Custom Redback's Knob Shop.

Before ordering your custom knob have a read through the following information and take a look at some of the examples produced by Custom Redback. We specialise in producing gear knobs with the infamous Aussie redback spider as the main embedded inclusion, however, we also embed other types of spiders, scorpions, gun shells, centipedes, etc. If you have something you want embedded into a knob contact us and we'll discuss it with you.

If you see a colour scheme you like in the examples, send us the knob number with your order. Feel free to ask for particular colours: *We like change and originality* :-D Be aware that many of the complex examples shown are one-offs and cannot be exactly replicated, they are for ideas only. Not all spiders, centipedes, scorpions etc are always available, some are seasonal.

Once you know what style of knob you are after, drop us an email stating your order and including your full name and postal details. Knobs can take up to 30 days to arrive after payment. Indicate your preferred method of payment.

Cheers

Mark Newton

Custom Redback, Adelaide, South Australia

Email: [info@customredback.com](mailto:info@customredback.com)

### Direct Deposit:

Bank: Common-wealth  
Name: Mark Newton  
BSB: 066-500  
Accnt: 10164740

### Cheque:

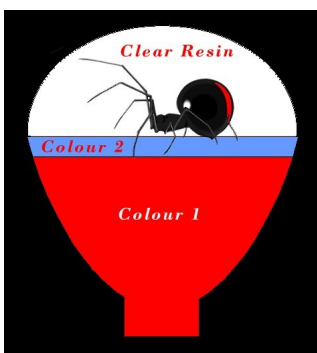
Post to:  
Custom Redback  
PO Box 6  
Highbury  
SA 5089

### Money Order:

Post to:  
Custom Redback  
PO Box 6  
Highbury  
SA 5089

### PayPal:

[placebos4u@thedailylink.com](mailto:placebos4u@thedailylink.com)



### Choosing Colours for your custom knob

Custom knobs can be either all one colour, or a base colour (see pic, colour 1), with a top thin layer (see pic, colour 2). The thin colour layer allows you to choose a main base colour you prefer for your cars interior, while setting the spider against a background you prefer to either make it stand out or hide it. Spiders generally have brown to black abdomens, with black legs and thorax. If you want the spider to stand out it pays to go for brighter colours, such as yellow, white, red etc. Dark colours such as black, blue, purple etc tend to camouflage the spider.



### Choosing the correct thread for your custom knob

The safest way to find the correct thread is to either buy some nuts from your local hardware to find which one fits onto your gear stick or take your existing knob into a hardware and find a bolt that will easily screw into it. Generally speaking most modern cars will be metric, either 10Mx1.25, or 12Mx1.25. Older Australian cars and American cars might be AF, not metric, so look for sizes around 1/2" or so. You need to find the correct size thread so your custom knob will thread on easily. An ill fitting thread could potentially damage the knob if excessive force is used to screw it on.

Knob #1  
Pearl Blue Base, Pearl  
White top



Knob #2  
Plain Red Base, Plain Yellow  
top



Knob #3  
Pearl Antique Bronze  
Base, Glow top



Knob #4  
Plain Black Base, Plain  
Yellow top



Knob #5  
Plain Black Base, Pearl  
Blue top



Knob #6  
Pearl White Base, Glow  
top



Knob #7  
Plain Black Base, White  
top Red Bleed



Knob #8  
Plain Red Base, Glow top



Knob #9  
Pearl White Base, Pearl  
Yellow top



Knob #10  
Pearl Yellow Base



Knob #11  
Plain Black Base



Knob #12  
Aztec gold with skull



Knob #13  
Plain Red Base, Glow  
Top



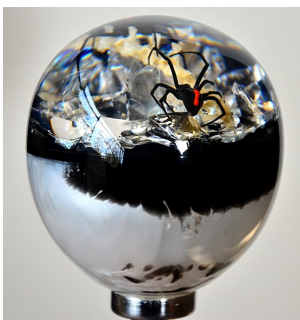
Knob #14  
Pearl Blue Base,  
Pearl Blue Base,



Knob #15  
Pearl Antique Silver Base,  
Pearl Gold top



Knob #16  
Pearl White/Black Bleed  
Base, Broken Glass,



Knob #17  
Antique Bronze Base



Knob #18  
Pearl White Base



Knob #19  
Sparkling Metallic Silver  
base, Desert Scorpion and  
bones, white top



Knob #20  
Black/Red Bleed Base,  
Pearlised top, guns shells,  
bling



Knob #21  
Plain Black Base, Shaped  
knob



Knob #22  
Pearl Antique Silver Base,  
Pearl Brilliant Yellow top



Knob #23  
Pearl Antique Bronze  
Base



Knob #24  
Pearl Blue Base, Pearl  
White top



Knob #25  
Pearl Violet Base, Glow  
top with Red bleed



Knob #26  
Plain Black Base, Plain Orange top



Knob #27  
Dog tags, White Base,  
Black top



Knob #28  
Black/Red Bleed Base,  
Pearl Yellow Top, gun  
shell



Knob #29  
Pearl Blue base and top,  
bones, spider



Knob #30  
Pearl Russet Red Bleed  
Base, Bones and Gun  
Shells



Knob #31  
Pearl Antique Bronze/  
Black Base Bleed, Glow  
Layer, reptile jaw, shells.



Knob #32  
Black Base, Redback on  
the toilet seat



Knob #33  
Fighting Scorpions, red  
russet base, pearl white  
top



Knob #34  
Beer Top Gear Knobs—Just ask, most colours available



Knob #35  
Plain Yellow Base, Broken Mirror, bones



Knob #36  
Yellow Base, Rising Sun disc on top—was a customer request



Knob #37  
Antique Bronze/ Black base, Sparkling white top, Scorpion



Knob #38  
Black base, Spider, Bones soil, skulls



Knob #39  
Pearl White Base & top, metal skull, glowing eyes.



Knob #40  
Black/Red Bleed Base, White Top, Trapdoor Spider



Knob #41  
Black/Red Bleed Base, centipede and spider, broken mirrors

